

tractors  
fork lift trucks  
empty container handling  
reach stackers ►  
straddle carriers  
steel coil handling  
pick & carry crane

products



C.V.S. spa

via Emilia, 20/22  
29010 Roveleto di Cadeo  
Piacenza - Italy

tel. +39.0523.503511  
fax +39.0523.500439

[www.cvsferrari.com](http://www.cvsferrari.com)  
[info.mktg@cvsferrari.com](mailto:info.mktg@cvsferrari.com)



## Technical Information

# Reach Stackers

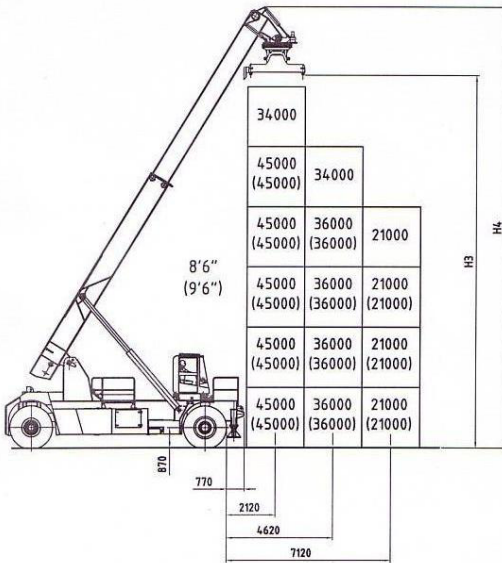
**FERRARI**  
**F 481**

<b>SPECIFICATION</b>	<b>01 Manufacturer</b>				CVS	CVS	CVS
	<b>02 Model</b>				<b>FERRARI 481</b>	<b>FERRARI 481 PB</b>	<b>FERRARI 481 BH</b>
	<b>03 Lifting capacity</b>	First Row/Second Row		Kg.	45000/36000	45000/31000	42000/32000
	<b>03 Lifting capacity</b>	under spreader + Piggy Back		Kg.	45000	45000	
	<b>04 Power unit</b>				Diesel engine		
	<b>05 Steering</b>				Steering wheel in the cab		
	<b>06 Tyre type</b>	Front / Rear			Pneumatic		
<b>07 Wheels</b>	Number at Front/Rear (*=driven)			4*/2			
<b>DIMENSIONS</b>	<b>08 Lifting Height</b>	Under Spreader - First Row	H3	mm.	16060	15530	
	<b>09 Width of Spreader</b>	20 Ft.		mm.	6050	6050	6052
		40 Ft.		mm.	12148	12148	12148
	<b>10 Side Tilting</b>	Mechanical		Deg.	+/- 3	+/-3	+/-3
	<b>11 Rotation</b>	Hydraulic		Deg.	-95+185	-95+185	-95+185
	<b>12 Side shifter</b>	Max		mm.	+/- 800	+/-800	+/-800
	<b>13 Boom Angle</b>	Min / Max		Deg.	0/59	0/59	0/59
	<b>14 Overall dimensions</b>	Length with spreader		mm.	13015	13015	13015
		Width	B	mm.	4160	4160	4160
	<b>16</b>	Boom height, Min.	H1	mm.	4920	4920	4920
	<b>17</b>	Boom height, Max	H4	mm.	19000	19000	19000
	<b>18</b>	Height - Top of Cab	H5	mm.	3884	3884	3034 (6264 with elevat. Cab)
	<b>19</b>	Seat height	H	mm.	2780	2780	2900 (5214 with elevat. Cab)
<b>20</b>	Min. dist. spreader from ground	H2	mm.	1735	1210	400	
<b>21 Turning radius</b>	Inner/Outer	R2/R1	mm.	1500/9500	1500/9500	1500/9500	
<b>22 Aisle for 90° stacking</b>	Incl. 200 mm. safety margin 20' 40'		mm.	11100/12800	11100/12800	11100/12800	
<b>PERFORMANCE</b>	<b>Stability (static)</b>				EN 1459	EN 1459	EN 1459
	<b>23 Speeds</b>	Travelling F. & R. Laden/Unladen		km/h	21/25	21/25	21/25
<b>24</b>	Lifting: max/zero load (with booster*)	m/s	M/s	0.22/0.23(0.31)	0.22/0.23(0.31)	0.22/0.23(0.31)	
<b>25</b>	Lowering Laden/Unladen		M/s	0,40/0,47	0,40/0,47	0,40/0,47	
<b>26 Drawbar pull</b>	Max - Laden		kN	297	297	297	
	<b>27 Gradeability</b>	Max at 0 km /h - Laden		%	21.5	21.5	21.5
<b>WEIGHTS</b>	<b>28 Gross vehicle weight</b>			Kg.	85500	91500	89300
	<b>29 Axle load - Front</b>	Unladen		Kg.	45000	54500	52200
		Laden		Kg.	109500	118000	110000
	<b>30 Axle load - Rear</b>	Unladen		Kg.	40500	37000	37100
		Laden		Kg.	21000	18500	21300
<b>TYRES</b>	<b>31 Tyres</b>	Number - Front/rear			4/2	4/2	4/2
<b>BRAKES</b>	<b>32</b>	Size - Front		ins.	18.00-33(36pr)	18.00-33(36pr)	18.00-33(36pr)
	<b>33</b>	Size - Rear		ins.	18.00-33(36pr)	18.00-33(36pr)	18.00-33(36pr)
	<b>34 Wheelbase</b>		L3	mm.	7500	7500	7500
	<b>35 Track Front</b>	Between centres - driven wheels		mm.	3033	3033	3033
	<b>36 Track Rear</b>	Between centres - steering wheels		mm.	2820	2820	2820
	<b>37 Ground clearance</b>	Mid-way along the wheelbase		mm.	420	420	420
	<b>38 Foot brake system</b>	Type/brake wheels			Wet disc brakes/Driven wheels		
	<b>39 Parking brake</b>	Type/brake wheels			Spring brakes/Driven wheels		
<b>STEERING SYSTEM</b>	<b>Type</b>				Hydrostatic		
<b>DRIVING SYSTEM</b>	<b>40 Engine</b>	Manufacturer - Type			SCANIA DC 12 58 A		
	<b>41</b>	Rating - DIN 6271		kW/(hp)	257 (350)	257 (350)	257 (350)
	<b>42</b>	Rated Speed		RPM	2100	2100	2100
	<b>43</b>	Peak Torque - at engine speed		Nm/RPM	1544 / 1200	1544 / 1200	1544 / 1200
	<b>44</b>	Number Cylinders - swept volume		cm3	6 / 11700	6 / 11700	6 / 11700
	<b>45</b>	Compression Ratio			18:1	18:1	18:1
	<b>46</b>	Fuel Consumption (Average)		l/h	12 - 15	12 - 15	12 - 15
	<b>47 Alternator</b>	Type - Rating		A	130 A (2X65A)	130 A (2X65A)	130 A (2X65A)
	<b>48 Starting Batteries</b>	Voltage - Capacity		V/Ah	2x12 V -200 Ah	2x12 V -200 Ah	2x12 V -200 Ah
	<b>49 Drive Axle</b>	Type			With double reduction		
	<b>50 Gear Box</b>	Type-number of gears forwar/rev.			Clark - 4/4	Clark - 4/4	Clark - 4/4
	<b>51 Clutch</b>	Clutch type			Torque converter		
	<b>52 Hydraulic pressure</b>	For attachments		Bar	140	140	140
<b>53 Sound Level</b>	Inside Cabine		dB(A)	EN 12053	EN 12053	EN 12053	

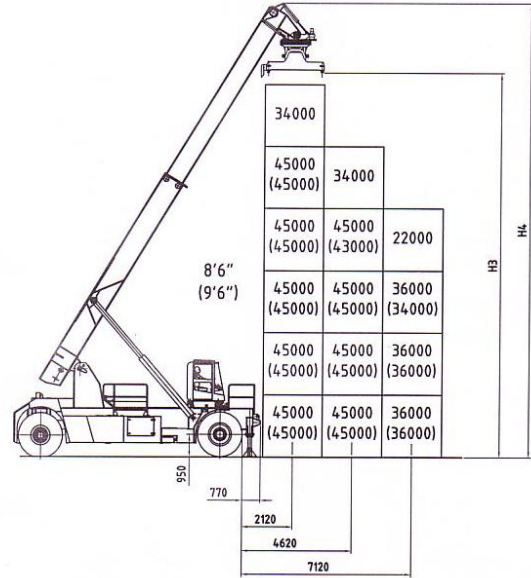
\* Booster option

# Ferrari 481

With stabilizers up

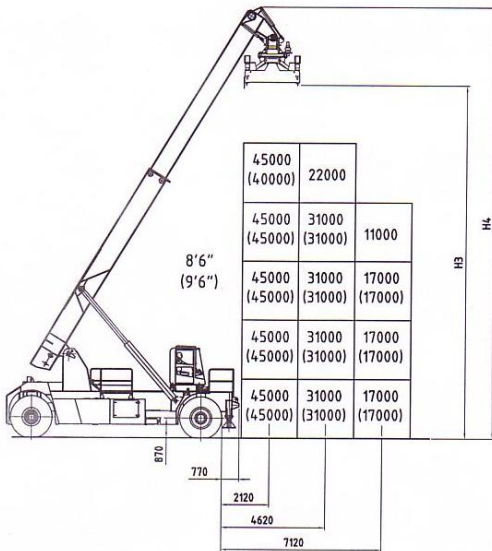


With stabilizers down

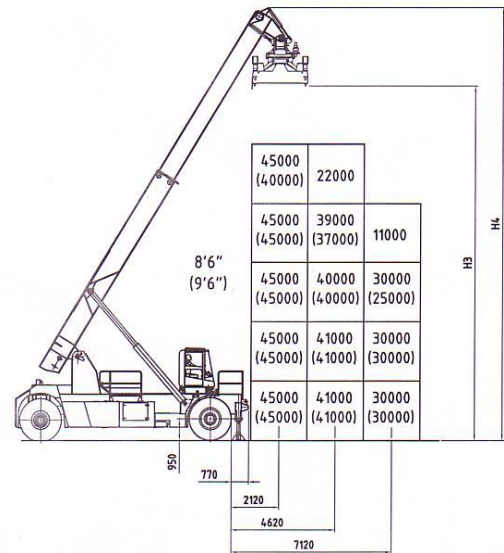


# Ferrari 481 PB

With stabilizers up

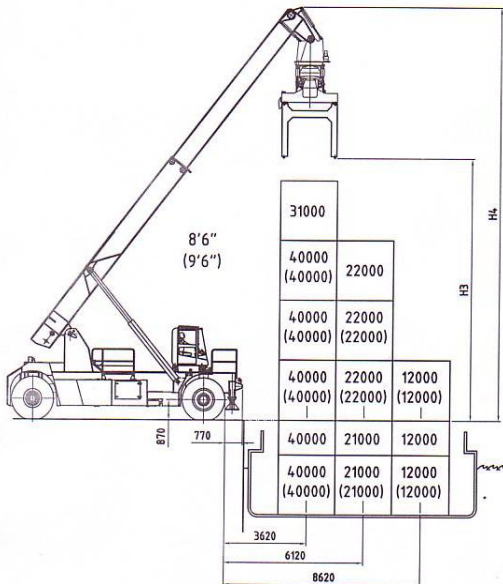


With stabilizers down

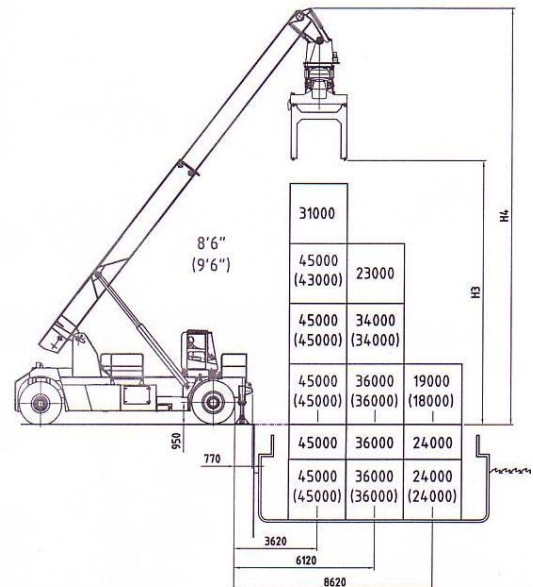


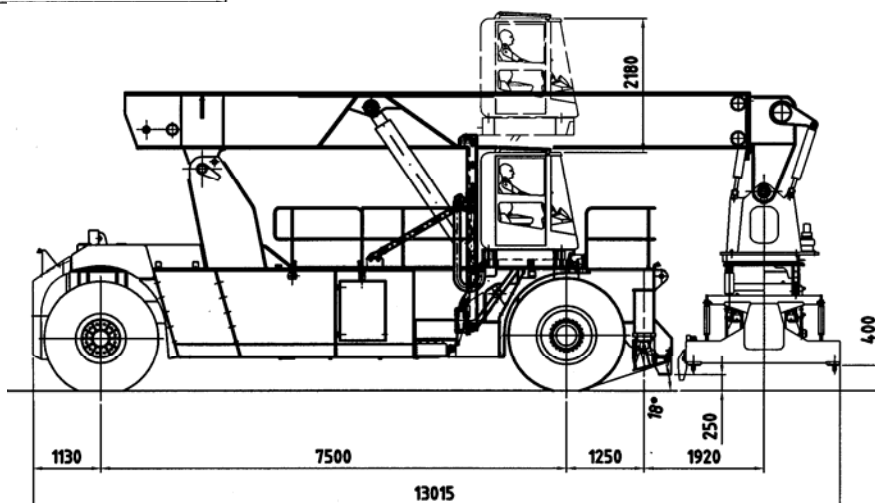
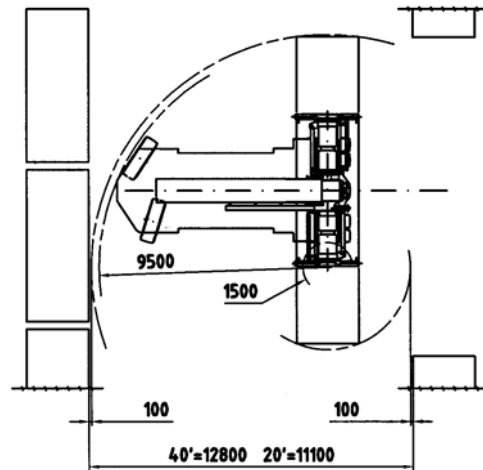
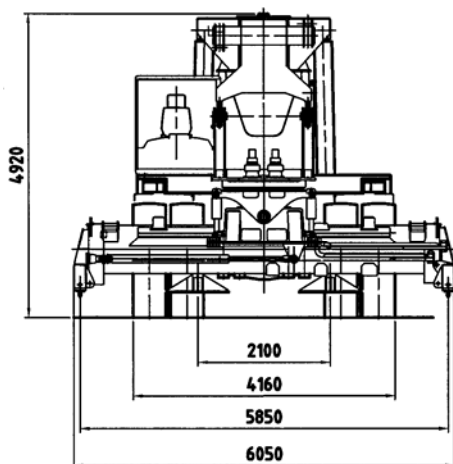
# Ferrari 481 BH

With stabilizers up



With stabilizers down





#### CHASSIS

All welded box type. Torsion resistant structure. Low center of gravity.

#### ENGINE

SCANIA DC 12.  
Euromot step 3. Best performances and lowest fuel consumption. Low polluting level.

#### TRANSMISSION

CLARK TE27 - Integrated torque converter and power shift - 4 Speeds forward and 4 speeds reverse.

#### FRONT AXLE

Extra wide front axle for maximum stability. Hub reduction. Wet disc brake. Oil cooling. Extra heavy duty type.

#### REAR AXLE

Articulating axle with double acting single cylinder. Rubber shock absorbers. Full hydrostatic steering system (Orbitrol) with priority valve.

#### HYDRAULIC SYSTEM

Variable displacement pumps. Load sensing proportional distributor controlling telescoping and lifting. Anti-saturation LUDV system. Electrical multifunctional joystick with capacitive type dead man device. Oil cooling system.

#### ELECTRICAL SYSTEM

Modular system with diagnostic capability. Reliable and easy to service. 24V. - Two 12V. batteries of low maintenance type. Electric/electronic control of the machine based on CAN BUS technology.

#### BOOM

High torsion - High quality steel. One basic outer section and one inner telescopic section.

#### SPREADER:

Highest strength steel. Compact and precise. Telescoping from 20' to 40'. All functions controlled from cab. Side mechanical tilting. Damping cylinder. Safety sensors on four corners.

The illustrations and data contained in this brochure are not binding. The manufacturer reserves the right to make changes for any reason while not altering the primary specifications



Distributed & Serviced by:

C.V.S S.p.A. - Via Emilia - 29010 Roveleto di Cadeo (PC) ITALY  
Tel. ++39.0523.503511 - Fax ++39.0523.500439  
E-mail: info.mktg@cvsferrari.com